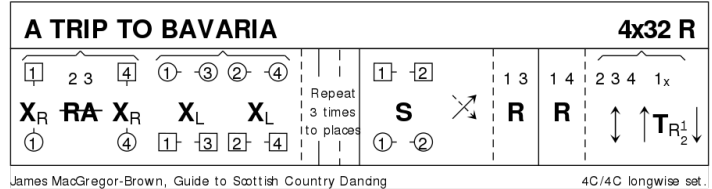


# Grenoble SCD - Saturday Ball

## 1 A TRIP TO BAVARIA R32 · 4/4L

James MacGregor-Brown: *Collins Pocket Reference: Scottish Country Dancing · Crib: E-cribs · Diagram: Keith Rose's Diagrams*

- 1-16 1c+4c cross RH, **while** 2c+3c ½RHA | middle and end Cs change place LH on sides ; repeat 3 times, finish (1,2,3,4) 1c facing down, 2c up
- 17-- 1c set to 2c | cross down to face 3c (2c dance up) ; 1c+3c repeat
- 25-- 1c+4c repeat ; All A&R, 1c changing sides RH on [30] (2,3,4,1)



James MacGregor-Brown, Guide to Scottish Country Dancing

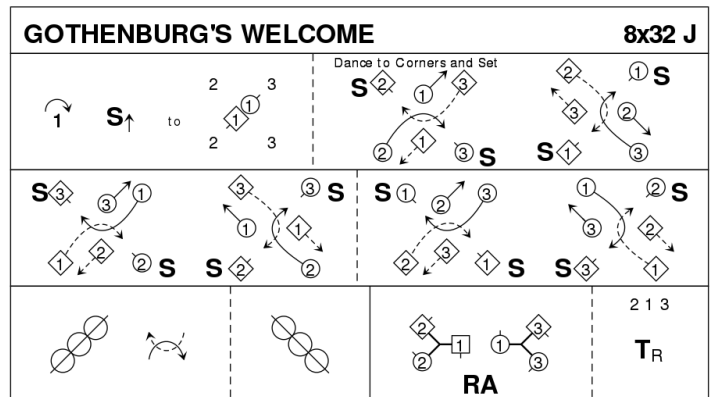
4C/4C longwise set.

Note: on [30] the original says »RH«, but »BH« is widely used.

## 2 GOTHENBURG'S WELCOME J32 · 3/4L

Bobby Munro: *RSCDS XXXVII 3 · Crib: E-cribs · Diagram: Keith Rose's Diagrams*

- 1-4 1c cast off one place (2c up) | 1c set advancing to face 1cnrs
- 5-16 Dance to each corner and set (»Free« cnrs set diagonally **while** centre dancers change place Rsh with the facing cnr, who in the centre pass Rsh to face next cnr on R | repeat five times, on alternating diagonals), 1c finish facing 3cnr position)
- 17-- 1c ½Reel4 on 1diag, pass Rsh ; ½Reel4 on 2diag (2,1,3)
- 25-- 2c+1W & 1M+3c RHA ; 2c+1c+3c turn RH.



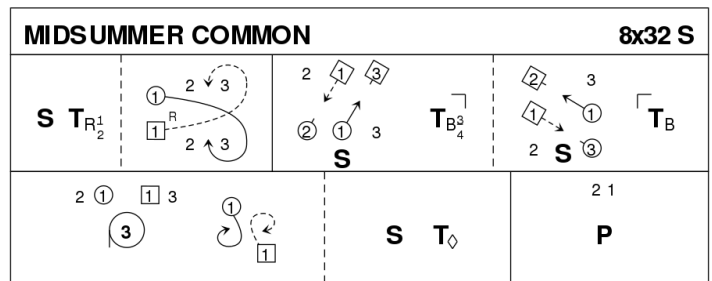
Bobby Munro, RSCDS Book 37.3

3C/4C longwise set.

## 3 MIDSUMMER COMMON S32 · 3/4L

Tom & Lindsey Ibbotson: *RSCDS XLIX 3 · Crib: SCDDDB Contributed Cribs & Diagrams · Diagram: Keith Rose's Diagrams*

- 1-- 1c set | ½ turn RH ; lead down, cross below 3c (2c up on [5-6] and cast to 2pl (2,1,3)
- 9-- 1c set adv to into BtoB facing 1cr while 1cr set | turn 1cnr BH into lines across ; 1c set adv to into BtoB facing 2cr while 2cr set | turn 2cnr BH
- 17-- 1W+3c & 1M+2c circle3, at end 1c swivels R to face P ; 1c set | 1c Petronella turn (to 2,1,3)
- 25-- 1c+2c poussette



Tom and Lindsey Ibbotson, 2013, RSCDS Book 49.3

3C/4C longwise set.

#### 4 SCHAUCHLIN JAMIE J32 · 3/4L

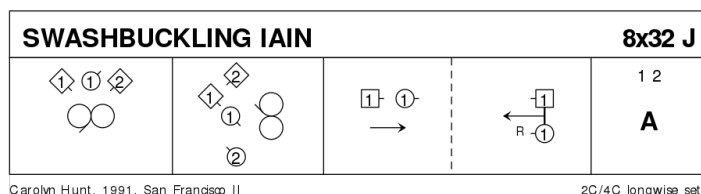
Martin Sheffield: *Modern Country Dances in the Scottish Tradition, devised since 1970 by Martin Sheffield · Crib: MiniClibs*

- 1-8 1s cast behind 2s & dance down between 3s, cast up to 2nd place & 2s+1s+3s set
- 9-12 1s 3/4 turn LH to face up/down **while** 2s & 3s petronella turn to next corner to right & 1s set in double triangle pstn (1M with 2L+3L & 1L with 2M+3M)
- 13-16 1s dance clockwise round 2nd corner (pstn) to 2nd place opposite sides **while** 2s+3s dance LH across 1/2 way & all set
- 17-20 1s 3/4 turn LH to face up/down **while** 2s & 3s petronella turn to next corner to right, 1s set in double triangle pstn (1L with 2s at top & 1M with 3s)
- 21-24 1s dance clockwise round 4th corner (pstn) to 2nd place own sides **while** 2s+3s dance LH across 1/2 way & all set, (3) 1 (2)
- 25-32 1s (prom hold) dance 1/2 diag reel of 3 giving RSh to 3M (1st place Ladies side) & give RSh to 3L to dance 1/2 reel with other corners & cross to 2nd pl

#### 5 SWASHBUCKLING IAIN J32 · 2/4L

Carolyn Hunt: *San Francisco Collection Volume 2 · Crib: E-cribs · Diagram: Keith Rose's Diagrams*

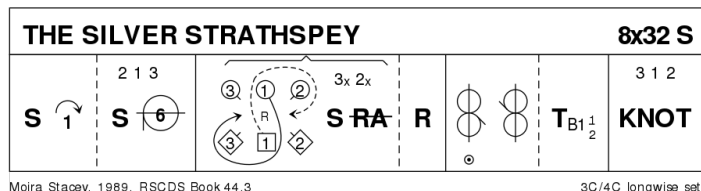
- 1- 1M Reel3 with 1W+2W (Rsh to 2W)
- 9- 1M with 1W tenaciously following Reel3 with 2c (Rsh to 2M)
- 17- 1c dance down middle, 1M leading ; 1c lead back up RHJ, 2c step in on [24] for
- 25- 1c+2c allemande



#### 6 THE SILVER STRATHSPEY S32 · 3/4L

Moira Stacey: *RSCDS XLIV 3 · Crib: E-cribs · Diagram: Keith Rose's Diagrams*

- 1- 1c set | cast (2c up) ; All Set | All circle6 L 1/2 round (3x,1x,2x)
- 9- 1c cross RH | cast R ; cross (up/dn) RH | cast R **while{8}** 2c+3c set diagonally | 1/2 RHA ; repeat (to 3x,1,2x)
- 17- 1/2 Reels3 across, Rsh to 2cnr ; 1c turn BH 1 1/2
- 25- 3c+1c+2c The Knot (2,1,3)



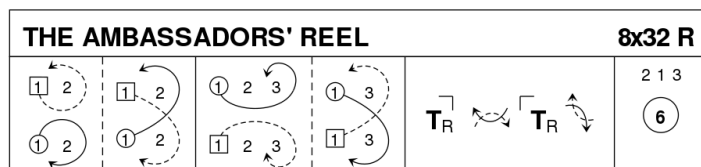
#### 7 TEACHER'S CHOICE #1

Jig

## 8 THE AMBASSADORS' REEL R32 · 3/4L

Susi Mayr: Vienna Book of Scottish Country Dances · Crib: E-cribs · Diagram: Keith Rose's Diagrams

- 1- 1c dance between 2c and cast up ; ½ Fig8 down round 2c,
- 9- 1c dance down between 3c (2c up) ; cast up, ½ Fig8 down round 3c (2,1,3)
- 17- 1c turn 1cnr RH, pass Rsh, turn 2cnr RH, pass Rsh into
- 25- Circle6 and back (2,1,3)



Susi Mayr, 2007, Vienna Book

3C/4C longwise set

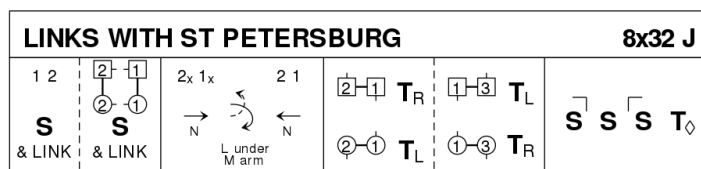
Deviser's Note: 1c can choose handing freely ; the timing is fluid, the barring only an approximation

## 9 INTERVALL

## 10 LINKS WITH ST PETERSBURG J32 · 3/4L

Malcolm Brown: RSCDS XLVI 10 · Crib: E-cribs · Diagram: Keith Rose's Diagrams

- 1- 1c+2c S&Link, finish 2c facing 1c NHJ ; S&Link to (2x,1x,3)
- 9- 1c, 2c following, dance down {3}, change sides with NHJ, W passing above M and under his arm, 2c+1c dance up to (2,1,3), 2c facing out
- 17- 2c turn 1c EH on sides ; 1c turn 3c EH, 1c finish BtoB facing 1cnr
- 25- SetH&G , petronella to (2,1,3)



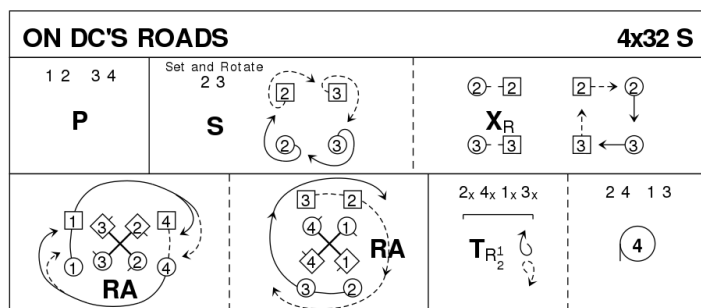
Malcolm Brown, 2009, RSCDS Book 46.10

3C/4C longwise set

## 11 ON DC'S ROADS S32 · 4/4L

Aymeric Fromherz: The Paris Book of Scottish Country Dances, vol. 1 · Crib: E-cribs · Diagram: Keith Rose's Diagrams

- 1-- 1c+2c & 3c+4c Pousette (1,2,3,4)
- 9-- 2c+3c Set&Rotate (1,3,2,4)
- 17-- 3c+2c RHA to sidelines **while{4}** 1W & 4M followed by P chase clw ½ (to 4x,3,2,1x) ; 4c+1c RHA to sidelines (4c in 2plx, 1c in 3plx) **while{4}** 3W+2W leading & 2M+3M leading chase clw ½ to sidelines (2c in 1plx, 3c in 4plx) (to 2x,4x,1x,3x)
- 25-- All turn RH ½ and cast to own sides ; 2c+4c & 1c+3c Circle4 L (2,4,1,3)



Aymeric Fromherz, 2015, Paris Book vol 1

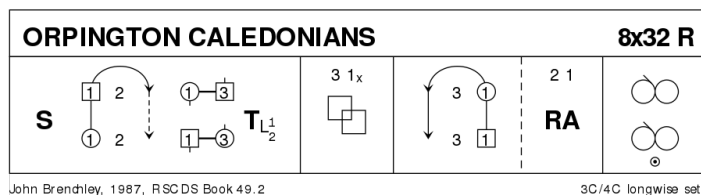
4C/4C longwise set

## 12 ORPINGTON CALEDONIANS

R32 · 3/4L

John Brechley: RSCDS XLIX 2 · Crib: SCDDDB Contributed Cribes & Diagrams · Diagram: Keith Rose's Diagrams

- 1-- 1c set | 1W followed by 1M cast off 1pl (2c up on 5-6) and cross | 1c+3c ½ turn LH on sidelines (1M+3M face out)
- 9-- 1c+3c L-Chain (1M face out)
- 17-- 1M followed by 1W cast up (3c down on 19-20) and cross ; 1c+2c RHA (1M+2W face out)
- 25-- Reels3 on the sides, 1c Lsh to 3c



## 13 TRIBUTE TO THE BASQUES

J32 · 3/4L

Martin Sheffield: Modern Country Dances in the Scottish Tradition, devised since 1970 by Martin Sheffield · Crib: MiniCribes

- 1-8 1s set & cast 1 place, set again & turn RH to face 1st corners
- 9-16 1s 3/4 turn 1st corners LH & retaining hands set, 1s+1st corners dance 1/2 Diag R&L & 1s end facing 2nd corners
- 17-24 1s 3/4 turn 2nd corners RH & retaining hands set, 1s+2nd corners dance 1/2 Diagonal L&R
- 25-32 1s turn LH **while** corners chase 1/2 way clockwise, 1s dance RH across (1L with 2s, 1M with 3s) ending in 2nd place own sides

## 14 TEACHER'S CHOICE #2

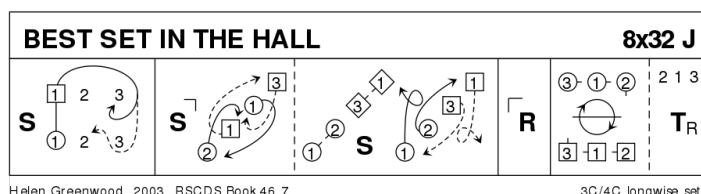
Strathspey

## 15 BEST SET IN THE HALL

J32 · 3/4L

Helen Greenwood: RSCDS XLVI 7 · Crib: E-cribs · Diagram: Keith Rose's Diagrams

- 1-- 1c set | 1W (1M follows) casts off 2, crosses, W dances up behind M line, and M dances up the middle, 1c face 1cnr (2c up)
- 9-- 1c set to 1cnr | 1c cast Rsh round each other to 3cnr position **while{2}** 1cnrs dance into centre, and swivel R to face own cnr ; repeat, 1cnrs finishing in exchanged places, and 1c facing 2cnr
- 17-- Repeat with 2cnrs (3x,1x,2x)
- 25-- All chase clw ½ round ; all turn RH. (2,1,3)



To: Auckland Region President, Campbell MacKay, nov. 2003

# 16 THE REEL OF THE ROYAL SCOTS

R32 · 3/4L

Roy Goldring: *The Leaflet Dances with Music* · Crib: *E-cribs* · Diagram: *Keith Rose's Diagrams*

- 1- 1W+2W (1M+2M) turn LH (RH) ½, finishing 1c BtoB in 2pl | All set as in DTr ; 1W+3W (1M+3M) turn RH (LH) ½ | 2c+3c+1c set as in DTr
- 9- 1c followed by 3c dance up between 2c, cast off ; dance NHJ down through 3pl, cast up to face 1cnrs, 3c looping into 3pl
- 17- 1c turn 1cnrs RH, pass Rsh (cnrs dance for {4}) ; turn 2cnrs RH (same), and cross Rsh to (2,1,3)
- 25- All circle6 and back

